

Network Camera

Installation Manual

Before operating the unit please read this manual thoroughly and retain it for future reference.

Mini Dome series



www.Redleafsecurity.net
© 2012 Redleaf Corporation

Welcome

Thank you for purchasing our IP camera. This Quick Reference guide describes how to install and configure your RedLeaf IP camera. Before you start to install and use your new camera, please read these instructions carefully. Before you start to install and use your new camera, please read these instructions carefully. Please open the accessory bag to check the items one by one in accordance with the list below. Contact your local retailer ASAP if something is missing or damaged in the bag. For the most up-to-date information about this product, visit the official RedLeaf website at www.redleafsecurity.net

⚠ Before your operation please read the following instructions carefully.

● 1 . Electrical safety

All installation and operation here should conform to your local electrical safety codes.

The power shall conform to the requirement in the SELV (Safety Extra Low Voltage) and the Limited power source is rated 12V DC in the IEC60950-1.

⚠ Please note: Do not connect these two power supplying sources to the device at the same time; it may result in device damage!

We assume no liability or responsibility for all the fires or electrical shock caused by improper handling or installation.

We are not liable for any problems caused by unauthorized modification or attempted repair.

● 2 . Transportation security

Heavy stress, violent vibration or water splash are not allowed during transportation, storage and installation.

● 3 . Installation

Do not apply power to the camera before completing installation.

Please install the proper power cut-off device during the installation connection.

Always follow the instruction guide the manufacturer recommended.

● 4 . Qualified engineers needed

All the examination and repair work should be done by the qualified service engineers.

We are not liable for any problems caused by unauthorized modifications or attempted repair.

● 5 . Environment

This series IP camera should be installed in a cool, dry place away from direct sunlight, inflammable, explosive substances and etc.

Please keep it away from the electromagnetic radiation object and environment.

Please make sure the CCD (CMOS) component is out of the radiation of the laser beam device. Otherwise it may result in CCD (CMOS) optical component damage.

Please keep the sound ventilation.

Do not allow the water and other liquid falling into the camera.

Thunder-proof device is recommended to be adopted to better prevent thunder.

The grounding studs of the product are recommended to be grounded to further enhance the reliability of the camera.

Framework

● 6. Daily Maintenance

Please shut down the device and then unplug the power cable before you begin daily maintenance work.

Do not touch the CCD (CMOS) optic component. You can use the blower to clean the dust on the lens surface.

Always use the dry soft cloth to clean the device. If there is too much dust, please use the water to dilute the mild detergent first and then use it to clean the device. Finally use the dry cloth to clean the device.

Please put the dust proof cap to protect the CCD (CMOS) component when you do not use the camera.

● 7. Accessories

Be sure to use all the accessories recommended by manufacturer.

Before installation, please open the package and check all the components are included.

Contact your local retailer ASAP if something is broken in your package.

Accessory Name	Amount
IPC Unit	1
C/CS adapter	1
Quick Start Guide	1
Resource CD	1
Hexagonal wrench	1
Position map	1

Framework

1 Framework

1.1 Rear Panel

Please refer to the following figure for the dimension information. The unit is mm. See - Figure 1-1 through -Figure 1-3.



Figure 1-1

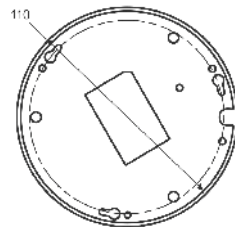


Figure 1-2

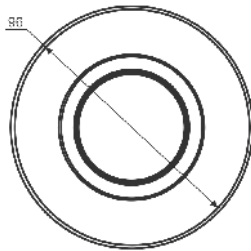


Figure 1-3

1.2 structure

Please refer to the following figure for detailed information. See -Figure 1-4.

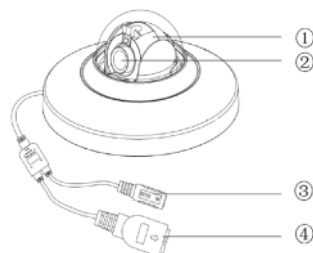


Figure 1-4

Please refer to Figure 1-4 and the following table for the detailed information about the structure of the camera

Framework

Please refer to Figure 4 and the following table for the detailed information about the structure of the camera

SN	Name	Function
1	X-Y-Z rotation module	
2	Device lens	
3	Dome camera enclosure	
4	Power input port	Connect to the DC 12+ power to input the power.
5	Network port	Network data input, output and PoE.

Installation

2 Installation

2.1 Device Installation

This series IPC can be put on the table to realize surveillance. Or you can use the bracket or the in-ceiling installation to realize the hang function. Please refer to the steps listed below. See Figure 2-1 and 2-2.

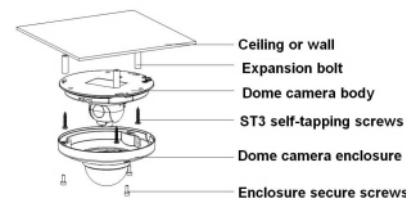


Figure 2-1

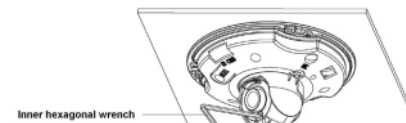


Figure 2-2

Step1

Use the inner hexagonal wrench (provided) to loose the three inner hexagon screws in the dome cover and then open the cover.

Step 2

Please take the installation position map in the accessories bag, and then paste it on the ceiling or the wall according to your monitor area requirements. Draw and then dig three plastic expansion bolts holes in the installation surface and then insert three expansion bolts in the holes. Secure these three bolts firmly.

Please dig a "cable exit hole" in the surface according to the installation position map if you want to draw out the cable from the top of the installation surface. You need to use the proper tool to open up the side port of the U-cable channel of the dome camera pedestal if you want to draw out the cable from the side port of the cable channel when you are installing the device cable. And then you can draw out the cable from the cable channel of the pedestal.

Step 3

Adjust the device installation pedestal to the proper position and then draw the cable through the cable exit you just dug in the ceiling (wall). Line up the TOP direction of the device to the installation position map and then line up the three screw holes in the device pedestal to the three plastic expansion bolt holes in the installation position. Put the three self-tapping screws in the three plastic expansion bolts firmly. Now the dome camera is secure in the installation surface.

Step 4

Loosen the two M3 secure screws of the lens rotation structure (Do not remove, loosen a little bit will be OK.). Use the inner hexagonal wrench to insert them to the inner hexagonal holes and then use the wrench to turn the lens. Adjust the lens to the proper monitor angle and then secure the screws of the lens rotation structure. The lens adjust angle ranges are: flip (0°~+75°), video pan rotation (-15°~+15°), video rotation angle(-15°~+15°).

Step 5

Line up the dome camera cover to the cable exits and put the cover back. Use the inner hexagonal wrench to secure the three inner hexagonal screws firmly. Now the installation is completed.

Installation

⚠ Note:

The device GND cable can effectively enhance the device reliability. The GND hole is near the cable exit of the back of the enclosure. The GND screw specification is M3. See -Figure 2-3.



Figure 2-3

2.2 SD Card Installation

Important

Some series product do not support the SD card storage function.

Please shut down the power and then turn off the device before you install the SD card.

Step 1

Please refer to the step 1 in chapter 2.1 to open the device.

Step 2

Find the "SD CARD" indicator in the enclosure. Adjust the SD card to the proper direction and then install. See -

Step 3

Please refer to the step 5 in chapter 2.1 to complete the installation.

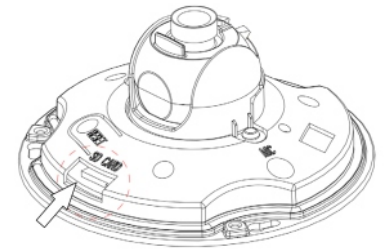


Figure 2-4

Quick Configuration Tool

3 Quick Configuration Tool

3.1 Overview

Quick configuration tool can search current IP address, and modify IP address. At the same time, you can use it to upgrade the device.

Please note that the tool only applies to the IP addresses in the same segment after your first login.

3.2 Operation

Double click the "ConfigTools.exe" icon; you can see an interface is shown as in -Figure 3-1.

In the device list interface, you can view device IP address, port number, subnet mask, default gateway, MAC address and etc.



Figure 3-1

Select one IP address and then right click mouse, you can see an interface is shown as in -Figure 3-2.

▲ Note:

You can set the IP address, subnet mask and gateway for the RLC and PC. Please note RLC IP address and PC IP address shall be in the same network segment if there is no router. RLC default IP address is 192.168.1.108. If there is a router, please set the corresponding gateway and subnet mask.

The factory default user name is admin and password is admin. For security reasons, please modify your password after you first login.

For detailed WEB operation, please refer to the RLC Web Operation Manual in the resource CD.



Figure 3-2

Select the "Open Device Web" item; you can go to the corresponding web login interface. See -Figure 3-3.

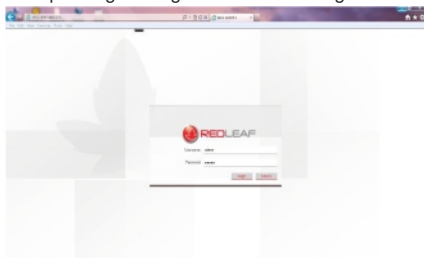


Figure 3-3

If you want to modify the device IP address without logging in the device web interface, you can go to the configuration tool main interface to set.

In the configuration tool search interface (Figure 3-1), please select a device IP address and then double click it to open the login interface. Or you can select an IP address and then click the Login button to go to the login interface. See -Figure 3-4.

In - Figure 3-4, you can view device IP address, user name, password and port. Please modify the corresponding information to login.

Please note the port information here shall be identical with the port value you set in TCP port in Web Network interface. Otherwise, you can not login the device.

If you are using device background upgrade port 3800 to login, other setups are all invalid.

Quick Configuration Tool

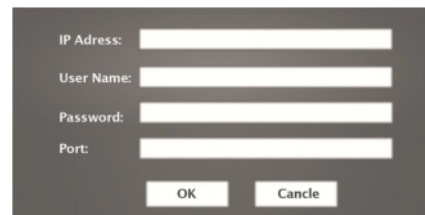


Figure 3-4

After you logged in, the configuration tool main interface is shown as below. See -Figure 3-5.

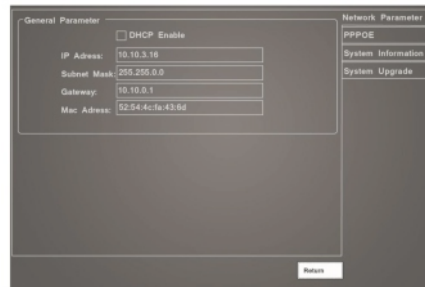


Figure 3-5

▲ For detailed information and operation instruction of the quick configuration tool, please refer to the Quick Configuration Tool User's Manual included in the resources CD.

Web operation

4 Web Operation

This series RLC product support the Web access and management via PC.

Web includes several modules: monitor channel preview, system configuration, alarm and etc.

4.1 Network Connection

Please follow the steps listed below for network connection.

- Make sure the RLC has connected to the network properly.
- RLC IP address and PC IP address shall be in the same network segment. IPC default IP address is 192.168.1.108. If there is router, please set the corresponding gateway and subnet mask.
- Use order ping ***.***.***.*** (IP camera address) to check connection is OK or not.

4.2 login and Logout

Open IE and input IP camera address in the address bar.

For example, if your camera IP is 192.168.1.108, then please input http:// 192.168.1.108 in IE address bar. See -Figure 4-1.

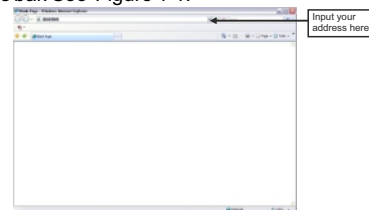


Figure 4-1

The login interface is shown as below. See -Figure 4-2.

Please input your user name and password. Default factory name is admin and password is admin.

▲ Note: For security reasons, please modify your password after you first login.



Figure 4-2

If it is your first time to login in, system pops up warning information to ask you whether install control web rec. cab or not after you logged in for one minute. Please click OK button, system can automatically install the control. When system is upgrading, it can overwrite the previous Web too. If you can't download the ActiveX file, please check whether you have installed the plug-in to disable the control download. Or you can lower the IE security level. See -Figure 4-3.

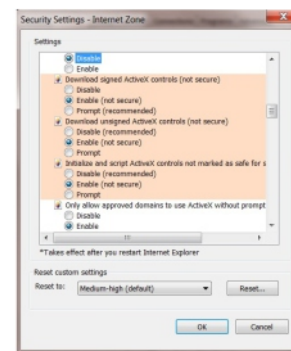


Figure 4-3



Figure 4-4

Web operation

After you logged in, you can see the main window. See -Figure 4-4 .

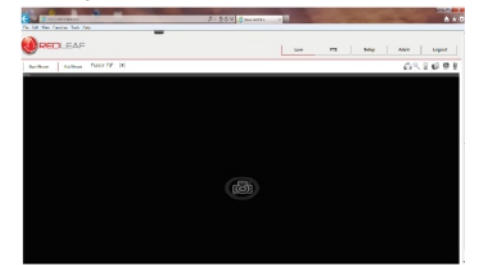


Figure 4-4

▲ Please refer to the Web Operation Manual included in the resource CD for detailed operation instruction.

Appendix: Toxic or Hazardous Materials or Elements

Component Name	Toxic or Hazardous Materials or Elements					
	Pb	Hg	Cd	CrVI	PBB	PBDE
Circuit Board Component	○	○	○	○	○	○
Device Construction Material	○	○	○	○	○	○
Wire and Cable	○	○	○	○	○	○
Packing Components	○	○	○	○	○	○
Accessories	○	○	○	○	○	○

O: Indicates that the concentration of the hazardous substance in all homogeneous materials in the parts is below the relevant threshold of the SJ/T11363-2006 standard.

X: Indicates that the concentration of the hazardous substance of at least one of all homogeneous materials in the parts is above the relevant threshold of the SJ/T11363-2006 standard. During the environmental-friendly use period (EFUP) period, the toxic or hazardous substance or elements contained in products will not leak or mutate so that the use of these (substances or elements) will not result in any severe environmental pollution, any bodily injury or damage to any assets. The consumer is not authorized to process such kind of substances or elements, please return to the corresponding local authorities to process according to your local government statutes.

▲ Note:

- This quick start guide is for reference only. Slight difference may be found in user interface.
- All the designs and software here are subject to change without prior written notice.
- All trademarks and registered trademarks are the properties of their respective owners.
- If there is any uncertainty or controversy, please refer to the final explanation of us.
- Please visit our website or contact your local service engineer for more information.